


COOPERTIRES



The **Discoverer Radial LT** is a true off-road performer that is built-to-last on-road. The all-season tread design and beefy tread pattern provides deep biting traction and quiet running at high speeds.



Discoverer Radial LT



Discoverer Radial LT

75 Series					
LT225/75R16 ●	115/112N	6.0	6.0 - 7.5	223	744
LT245/75R16 ●	120/116N	7.0	6.5 - 8.0	248	774
82 Series					
205R16C ●	110/108Q	6.0	5.5 - 6.5	206	734
85 Series					
LT215/85R16 ●	115/112N	6.0	5.5 - 7.0	216	772
LT235/85R16 ●	120/116N	6.5	6.0 - 8.0	235	806
Hi-Flotation Series					
27x8.50R14LT W	95Q	7.0	6.0 - 7.5	221	673
31x10.50R15LT W	109Q	8.5	7.0 - 9.0	267	767
32x11.50R15LT W	113Q	9.0	8.0 - 10.0	290	795
33x12.50R15LT W	108Q	10.0	8.5 - 11.0	315	823
33x12.50R16.5LT W	118N	10.0	8.5 - 11.0	323	820

- Black Sidewall
- W Outline White Letter

- SYMBOLS KEY**
- SD SERVICE DESCRIPTION
 - RECOMMENDED RIM WIDTH
 - APPROVED RIM WIDTH - MIN/MAX
 - SECTION WIDTH
 - OVERALL DIAMETER

Discoverer Radial LT

All-Season Tread Design: Rugged tread pattern combines shoulder lugs and tread cleats for deep biting traction and quiet running at high speeds.

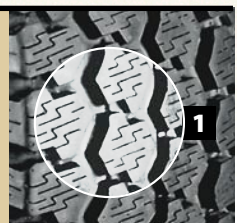
Radial Construction: The tyre construction offers performance advantages over equivalent size bias light truck tyres.

Wide Foot Print: With a wider tread than our previous light truck radials, this all-season tyre is designed to wear evenly when run at recommended inflation pressures and loads. Belt edges are supported by specially-designed sidewall wedges.

Raised Outline White Letters: The new improved whitewall compound is visibly brighter.

RATING	KM/H	MPH	RATING	KM/H	MPH	RATING	KM/H	MPH
N	140	87	S	180	112	V	240	149
Q	160	99	T	190	118	W	270	168
R	170	106	H	210	130	Y	300	186

1 All-Season Tread Design: Provides excellent handling and traction whatever the weather.



For speed symbols V,W & Y load capacity reductions of up to 15% apply, above 210 Km/h for V-rated tyres, 240 Km/h for W-rated tyres & 270 Km/h for Y-rated tyres. Please consult Cooper Tire & Rubber Company for further information.

